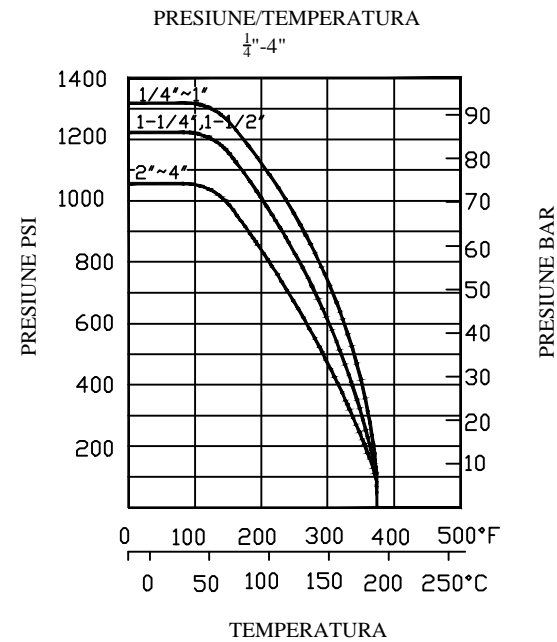
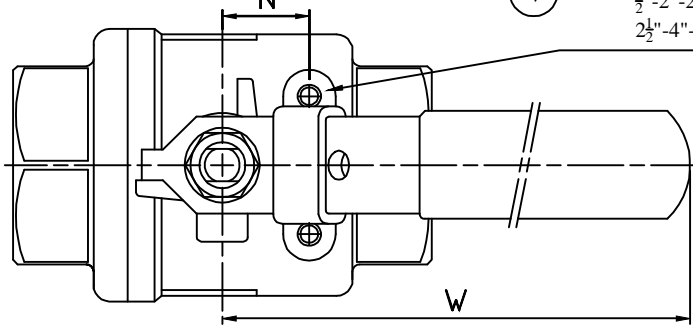
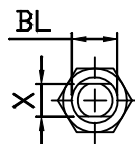


1/2"-2"-2 gauri filetate 1/4"
 2 1/2"-4"-4 gauri filetate 1/4"



DN	d	L	H	W	S	S1	X	N	P	BL	Factor Cv	Moment kgf-cm
1/4"	11.6	54	52	105	16.8	10.2	5.0	12.5	25	5/16"	6.6	40
3/8"	12.7	54	52	105	16.8	10.2	5.0	12.5	25	5/16"	7.9	40
1/2"	15	62.5	65	130	16.8	10.2	5.0	12.5	25	5/16"	11.2	54
3/4"	20	73.5	70	130	21	13.5	6.5	21	24	3/8"	21	74
1"	25	86	78	150	24	16	8	22.5	33.5	7/16"	35	104
1-1/4"	32	101	82	180	25	16	8	23.5	38.1	7/16"	57	135
1-1/2"	38	110	90	200	26.5	17	9	23.5	38.1	1/2"	80	180
2"	50	123	98	200	26.5	17	9	23.5	38.1	1/2"	148	250
2-1/2"	65	165	140	240	41.5	29.5	12	35	56	3/4"	265	480
3"	80	190	145		41.5	29.5	12	35	56	3/4"	415	750
4"	100				47.5	36.5	16	50	63	1"	780	1100

14	Opritor	AISI 304	
13	Protectie maner	Plastic	
12	Piulita	AISI 304	
11	Saiba	AISI 304	
10	Maner	AISI 304	
9	Presetupa	AISI 304	
8	Garnitura etansare	PTFE	
7	Garnitura presetupa	PTFE	
6	Tija	AISI 304	
5	Inel "O"	PTFE	
4	Inel de etansare	15%R- PTFE	
3	Sfera	ASTM 351 Gr. CF8M	
2	Corp lateral (2)	1033;ASTM A216 Gr.WCB	
1	Corp	ASTM A216 Gr.WCB	
REP	DENUMIRE	MATERIAL	

Desenat: F.I.V.	ROBINET CU OBTURATOR SFERIC		Verificat: S.S
	EUDIS VALVES	OTEL CARBON	MODEL 2 PIESE
	DN 1/4" -4"	PN conf.diagramei	NUME FISIER: Fig.9.50
	EUDIS S.A		17.02.2016
			Fig.9.50